

MINERAL  
COMPOSITE  
**CAREA®**

MINERAL  
COMPOSITE  
**CAREA®**

**CAREA®**  
ZA de bel air - 49 520 Combrée - France  
T + 33 (0)1 69 35 53 63  
mail: [contact.facade@caree.fr](mailto:contact.facade@caree.fr)  
[www.carea-facade.fr](http://www.carea-facade.fr)  
[www.carea.uk.com](http://www.carea.uk.com)



**RAINSCREEN CLADDING**  
& THERMALLY INSULATED CLADDING SYSTEMS

INTERLOCKING PANELS

GROOVED CLADDING

MADE IN FRANCE



ANTICIPATION  
AS SECOND  
NATURE

MINERAL  
COMPOSITE  
**CAREA**<sup>®</sup>

# EDITORIAL

Changing standards, changing expectations, regulations that impose new requirements....

The building and construction industry is constantly changing. A moving world that forces us to reinvent ourselves to meet new needs and to keep ahead of the pack.

**For us, this necessary anticipation has become second nature.... Since our creation 35 years ago, we have made innovation a daily commitment.**

It is this capacity to imagine tomorrow that has made CAREA® a leader with unanimously recognised know-how.

We have never stopped developing our expertise to create a highly technical product range using a naturally ecological mineral.

Today CAREA® can offer eco-virtuous solutions using exclusive composite materials.

**We are proud of our know-how and assert it. Of course, we continue to feed it and develop it to become an increasingly unavoidable actor...**

**An actor that counts and, stimulated by your trust, shows the way.**

**We believe that the future is designed today!**

Thierry Leverrier  
CEO of CAREA® Group



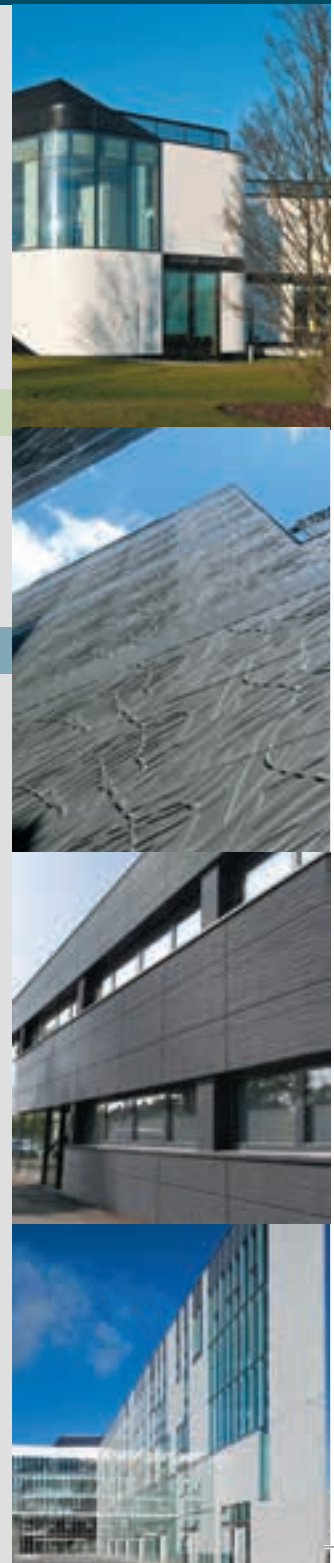
# CONTENTS

8-9	<b>THE GROUP</b>
10-11	<b>CAREA® MATERIALS</b>
12-13	<b>OUR COMMITMENT SUSTAINABLE DEVELOPMENT</b>

14-15	<b>UNIQUE EXPERTISE MULTIPLE ACTIVITIES</b>
16-17	<b>FROM MATERIALS TO MARKETING</b>

## CAREA® SYSTEMS

<b>CAREA® FACADE</b> .....	18-19
<b>EXTERNAL THERMAL INSULATION</b> .....	20-21
<b>OUR RANGES</b> .....	22-23
<b>CAREA® INTERLOCKING PANELS</b> .....	25-37
<b>Systems</b> .....	26-27
ALPHA .....	28-29
AQUILA .....	32-35
The colour range.....	34-37
<b>CAREA® GROOVED PANELS</b> .....	39-57
<b>Systems</b> .....	40-41
<b>Grooved panels</b>	
ARDAL .....	42-45
ACANTHA .....	46-49
ARMADA .....	50-53
<b>Undercut panels</b>	
ARTEMA .....	54-55
The colour range .....	56-59
<b>ADDITIONAL PRODUCTS</b>	
HOB: Window pod systems .....	60-61
CAREA® PRIMALU Backing structures .....	62-63
<b>CAREA® SERVICES</b>	
CAREA® TECHNICAL CENTRE.....	64
CAREA® School .....	65
<b>PHOTO LIBRARY</b> .....	66-69

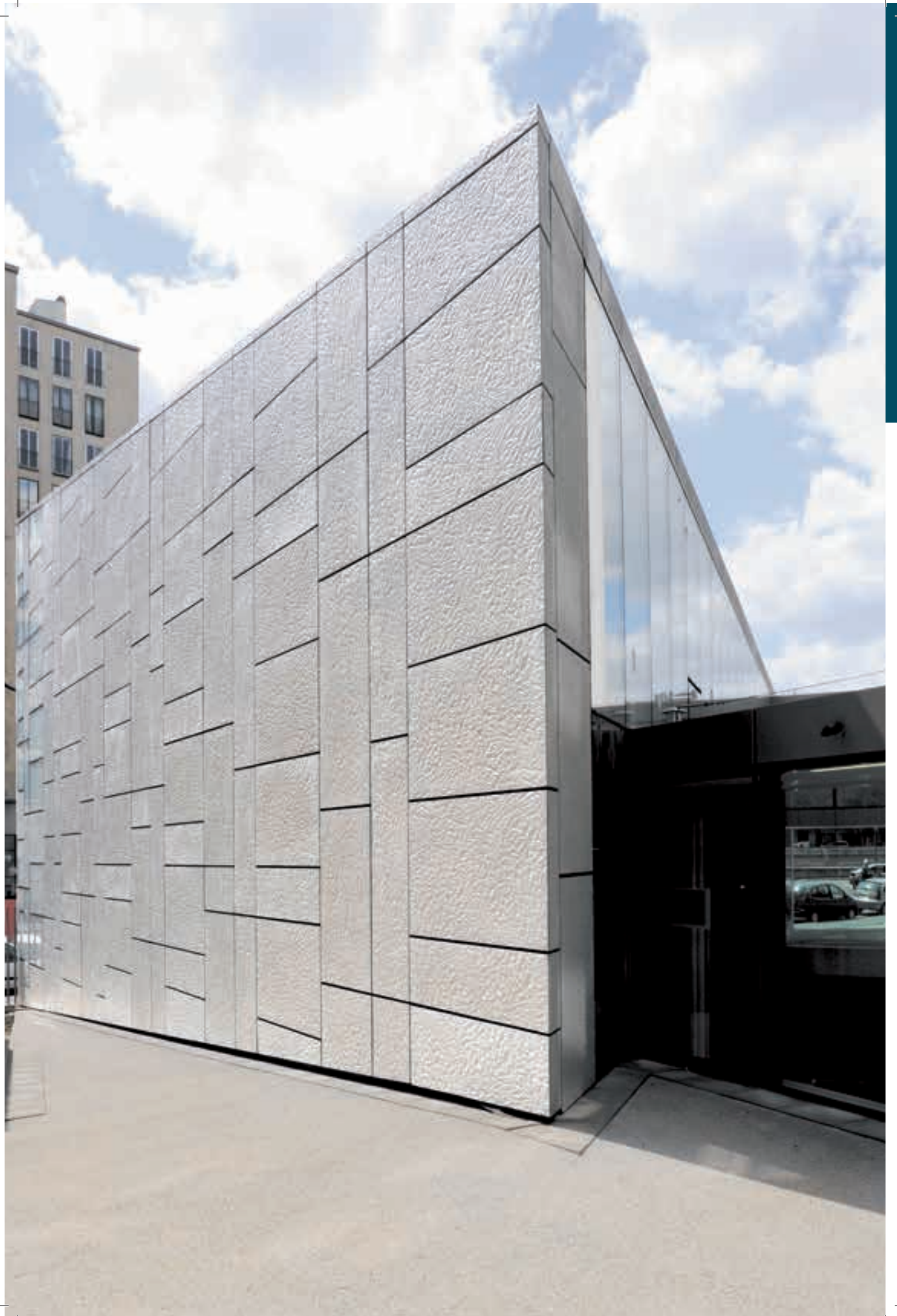


" WE HAVE MADE INNOVATION  
A DAILY COMMITMENT"

John Lewis









# CAREA® GROUP

## OUR VALUE SERVING OUR AMBITION

### ONGOING INNOVATION

For over 30 years the CAREA® Group has been designing, manufacturing and distributing building products made from natural materials. As a major manufacturer in the cladding and external insulation markets, CAREA® has proved its know-how and expertise surrounding mineral composite materials through the development of two other activities: External paving and sanitary equipment for kitchens and bathrooms, including sinks, wet rooms, shower cabins and shower bases.

### OUR SKILLS

The CAREA® Group has over 300 employees and at the European level has three sites in France dedicated to its three activities, a technical centre and a certified professional training centre, the "CAREA® SCHOOL", as well as a research laboratory which is an expression of our desire to be innovative and to continuously improve the technical and aesthetic qualities of these materials.

### RESPECT THE ENVIRONMENT

CAREA® believes certain values are highly important. CAREA® has always believed it is important to prioritise eco-friendliness. In order to evaluate the environmental impact of its materials, CAREA® has created environmental and health declarations for all its products. (FDES compliant with the standard nf p01 010), the equivalent of BREEAM.

- 3 factories in France
- 3 activities: Cladding, Sanitary products, external paving
- 1 technical department
- 1 training School CAREA SCHOOL
- 1 R&D department



# CAREA®

## MATERIALS

- **Exclusive materials developed by CAREA® Group.**
- A total supply service:  
From conception to manufacturing, your ideas becoming reality.
- A continuous care for innovation and development maintains CAREA® at the forefront
- CAREA® masters 3 types of facing:  
Cladding (Rainscreen), Panelling and Surfacing.
- A skilful and reactive business team is always available in technical centre.
- A training centre "CAREA® SCHOOL" opened to professionals who want to improve their skills in cladding systems.
- An eco-friendly behaviour: CAREA® products are subject to an FDES (Environmental and Health Declaration) equivalent to BREEAM.

### OUR STRENGTHS

- Secret fixing
- Non-porous products (unaffected by graffiti)
- Resistance to external and meteorological aggressions
- Exclusive materials developed by CAREA® Group.

ALL PRODUCTS DEVELOPED,  
MANUFACTURED AND SOLD BY CAREA®  
COME WITH A CSTB / BBA / ITB TECHNICAL  
APPROVALS AND A GUARANTEE.

# ECO-FRIENDLY

The cladding, panelling and surfacing solutions developed for over 35 years by CAREA®, fully meet the requirements of the latest thermal regulations and offers unrivalled architectural possibilities.

CAREA®  
CONFIRMS  
ITS LEADING  
POSITION IN THE  
MARKET FOR  
EXTERNAL THERMAL  
INSULATION.

Years of R&D have enabled CAREA® to design and manufacture products to meet the market and environmental requirements.

CAREA® CARRIED OUT A STATUS REPORT ON THE IMPACT OF ITS PRODUCTS ON THE ENVIRONMENT COMPLETING THE

FDES (SANITARY AND ENVIRONMENTAL DECLARATION STANDARDS) EQUIVALENT OF BREEAM AND CONFIRMING ITS

ENVIRONMENTALLY FRIENDLY BEHAVIOUR.

- USE OF NATURAL RESOURCES
- LOW ENVIRONMENTAL IMPACT DURING MANUFACTURE AND INSTALLATION
- LOW WASTAGE ON SITE

## STANDARDS WE ARE COMMITTED TO



ÉCO - CITOYEN  
FDES







# CAREA® GROUP: UNIQUE EXPERTISE, MULTIPLE ACTIVITIES

## INDUSTRIAL KNOW-HOW AND UNIQUE EXPERTISE



Thanks to its industrial know-how and its unique experience of the composite mineral material, CAREA® Group currently proposes a complete range of solutions, based on three main activities: the Facade panel market for External Thermal Insulation, sanitary equipment for the kitchen and bathroom (sinks, washbasin stands, cabins and bath areas) and external paving.

### CAREA® Facade

Our CAREA® facade range allows you to fully express your creativity through your walls, and meet all your requirements, both technical and aesthetic, while maintaining good value for money.

**CAREA Facade panels are easy to install and adapt to all your projects** - both new build and refurbishment - and make it possible to limit energy loss. In fact, thanks to our commitment to sustainable development, we have developed innovating external thermal insulation solutions for interlocking panels, cladding and surfacing that meet the requirements of the new heat regulations.

### CAREA® Sanitary

Sinks, sink + unit concepts, washbasin stands, washbasin stands + units, shower cabins and bath areas: our kitchen and bathroom solutions are a source of inspiration for all your interior design projects. **A choice of textures and colours, or sizes:** all combinations are possible, and you are certain to benefit from an exclusive material, recognised for its high technical qualities.

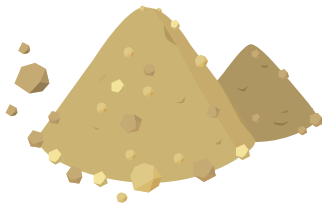
### CAREA® Flooring

**Our composite mineral materials models are very "design" and show a good balance between appearance and strength.**

Unalterable and high performance, they withstand external aggression and shocks while offering a modern and trendy style.

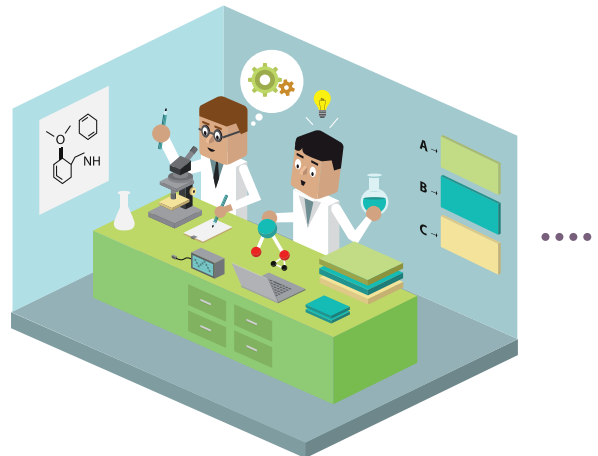
# MONITORING ALL ITS ACTIVITIES

By privileging vertical integration from mineral selection to the sale of its products, CAREA® demonstrates its will to control all its activities. We have one objective: to guarantee our customers an exemplary level of quality.



## CAREA® MATERIAL

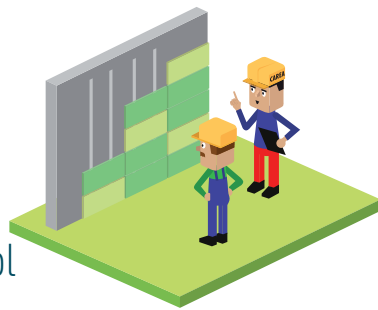
*CAREA® is a composite material containing 90% mineral charge.*



## R&D Laboratory

*Our R&D laboratory continuously seeks to improve our CAREA® product quality, using new, and ever more innovating mixes. Our aim: to achieve a product that is more technical, more design, and more efficient.*

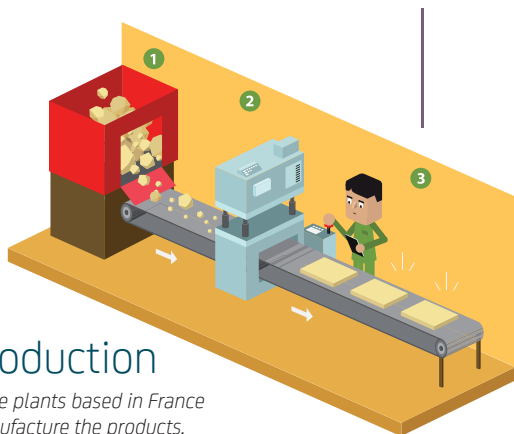




## CAREA® School

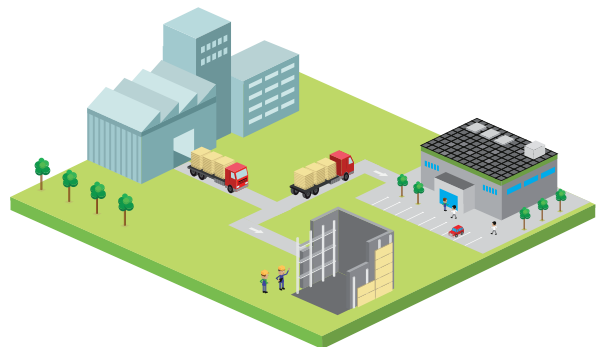
APPROVED TRAINING CENTRE

*In order to obtain the perfect installation everytime, we created carea® school. our dedicated technical team trains you in every stage of fitting our products to achieve perfection for each project*



## Production

*Three plants based in France manufacture the products.*



## Marketing

*Thanks to our integrated sales force, our products are recommended to a wide audience, project owners, contractors and fixers.*



## CAREA® Technical centre

*To answer your technical enquires, carea has created the technical centre and design department*





CAREA®  
**FACADE**

---

CAREA® MEETS THESE NEW  
REQUIREMENTS BY PROVIDING  
OPTIMUM THERMAL PERFORMANCES

# EXTERNAL THERMAL INSULATION (E.T.I.)

EXTERNAL THERMAL INSULATION, KNOWN AS E.T.I., IS A TECHNIQUE TO TREAT FACADES DESIGNED TO SIGNIFICANTLY INCREASE THE THERMAL PERFORMANCES OF THE WALL.

IT ALSO BRINGS SIGNIFICANT ENERGY SAVINGS.

**This technique fully contributes to the comfort of the inhabitants and also gives the building added value. E.T.I. consists in placing the insulating material outside the building (on the cold side), rather than on the inside (warm side).**

External thermal insulation has the advantage of doing away with thermal bridges. E.T.I. processes apply to new and existing builds (private housing and apartment blocks, hospitals, offices, etc.)

The "Grenelle de l'Environnement" (French conference on ecology) highlighted this insulation technique by announcing a 15% reduction in energy consumption every 5 years, to reach 40% in 2020. Over 30 million buildings are concerned, including private housing and apartment blocks. The long term objective is to have energy saving, or even energy positive, housing thanks to the use of E.T.I. systems combined with renewable energy sources.

## The benefits of an E.T.I. system

If external thermal insulation uses thermal notions and regulations, for example European Technical Approvals (E.T.A.), it is also based on compliance with installation best practises.

### REDUCTION

Reduction of energy loss by **removing cold bridges**

### PROTECTION

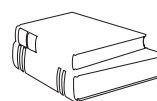
Protection of building envelope **from the weather**

### COMFORT

**Improvement of summer and winter comfort** by increasing thermal inertia, while guaranteeing perfect continuity with other elements such as the roof, the joinery, the doors, etc.



**35%**  
IS THE ENERGY LOSS RATE WHEN THE WALLS OF A DWELLING ARE INCORRECTLY INSULATED





**RT 2012**  
FRENCH STANDARDS FOR NEW ENERGY CHALLENGES



**7.3%**  
OF HOUSEHOLD'S CONSUMPTION EXPENSES IS FOR ENERGY OF WHICH 3,8% FOR HOME ENERGY

		SYSTEMS	PRODUCTS	FINISHES	SIZES L x H (in mm)	WEIGHT kg / m <sup>2</sup>
CAREA® INTERLOCKING PANELS	CLADDING / INTERLOCKING PANELS / SURFACING		ALPHA	PIERRE DU SUD PIERRE DE LOIRE MATT BRICK SLATE	510 x 340 700 x 470	from 6.9 to 7
			AQUILA	MATT PIXEL DUNE CARVI	600 x 300 600 x 600 600 x 1200 1200 x 600 1350 x 600	from 8 to 12.5
CAREA® GROOVED PANELS	CLADDING / SURFACING		ARDAL S11	MATT GLOSSY SHELL RIVEN	14 sizes from 450 x 450 to 1200 x 600	26
			ACANTHA S14 S16	MATT GLOSSY RIVEN PAPYRUS RHODES URBA [NEW] MOON	[NEW] Maximum size 3000 x 900mm	from 35 to 43
			ARMADA S21	MATT GLOSSY RIVEN RHODES PAPYRUS	1800 x 450	50
				CAUCASE	600 x 500 and 400 x 500 (cannot be dissociated)	
MATT	900 x 300					
CLADDING FACINGS ON INSERTS			ARTEMA	MATT GLOSSY PAPYRUS RHODES URBA TAÏGA VEGETAL WOOD PRINT BESPOKE	Maximum size 2400 x 1000	from 38 to 50

COLOURS	TECHNICAL APPROVALS	PAGE
66 COLOURS P. 34/37	 	28
	 	32
89 COLOURS P. 56/59	 	42
	 	46
	 	50
		54







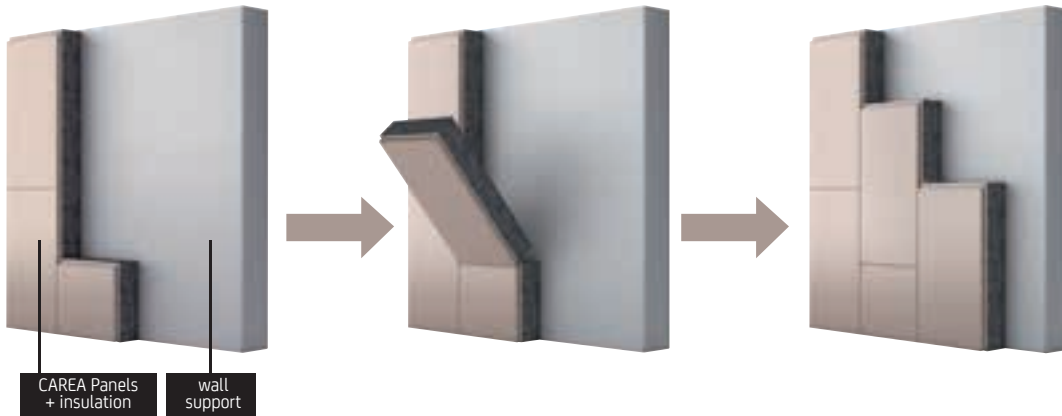


CAREA®  
**INTERLOCKING  
PANELS**

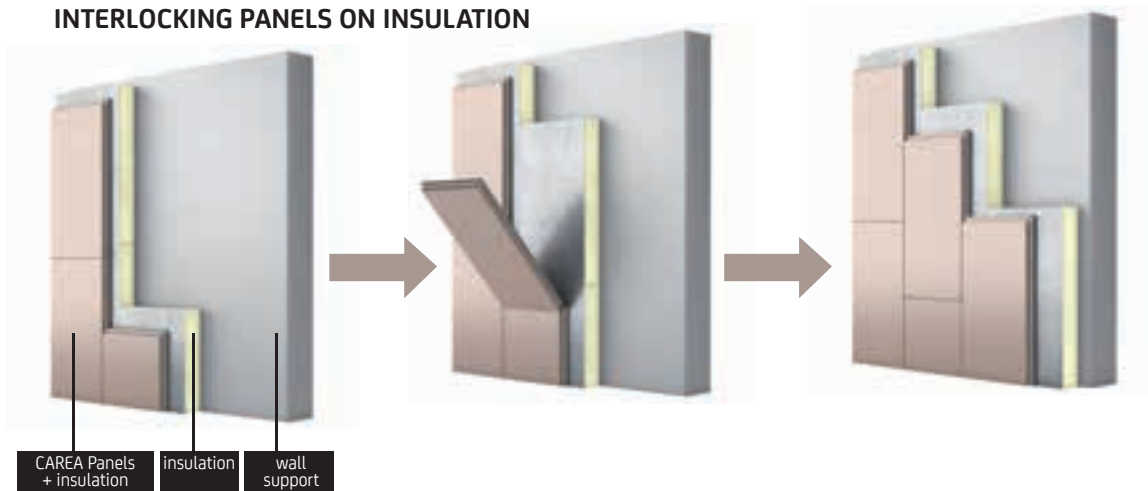
---

# SYSTEMS

## SURFACING



## INTERLOCKING PANELS ON INSULATION



## OTHER SYSTEM

CLADDING can be installed on wood frame and wood frame buildings)

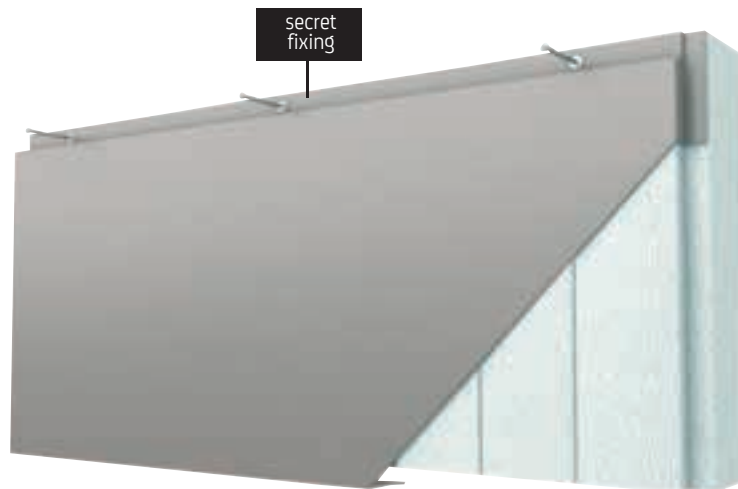


Flash the codes to access the surfacing demonstration videos.



HAVE A LOOK ON  
CAREA® SCHOOL P. 63.

SURFACING IS ON EXTERNAL IN SULATION SYSTEM MADE UP OF CAREA®  
INTERLOKING PANELS AND FACTORY INSTALLED INSULATION MATERIAL.



## OUR STRENGTHS

- Fast and economic fixing
- Secret fixing
- Insulation thickness from 40 to 120 mm
  - Rock wool - PSE th38 - PSE th32
  - Polyurethane
- High resistance for exposed wall based
- Easy maintenance
- High durability
- Improves facade watertightness

DRESS & INSULATE YOUR EXISTING FACADE AT ONCE !



### WREXHAM UNIVERSITY

**Architect:** AEW Architect

**Main contractor:** Midas construction

**Fixer:** Simco external facades

# ALPHA

THE COST EFFECTIVE SOLUTION

**SIZES**  
510 x 340mm  
700 x 470mm

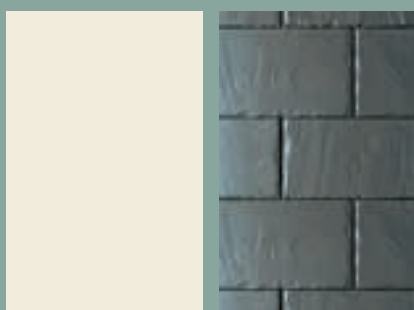
**THICKNESS**  
3mm  
5mm (Q4) Shock resistance

**WEIGHT**  
7 to 12kg per m<sup>2</sup>



PIERRE DU SUD

PIERRE DE LOIRE



MATT

SLATE



BRICK



LE NAUTILUS - AURAY  
Architect:  
Cabinet Bruchec (Hennebont)  
Main Contractor:  
SA Aiguillon (Lorient)



COLOURS ON P. 34/37

MADE IN FRANCE

## TECHNICAL SPECIFICATIONS ALPHA

FINISHES	PANEL SIZES L x H (in mm)	THICKNESS		WEIGHT PER m <sup>2</sup> in kg (without insulation)		JOINT SIZES l x d (in mm)	PANELS m <sup>2</sup>	FIXTURES m <sup>2</sup>
		STANDARD	REINFORCED Q4	STANDARD	RENFORCÉ Q4			
PIERRE DU SUD	510 x 340	3	5	7	12	6 x 4	5.76	11.5
	700 x 470						3	6
PIERRE DE LOIRE	510 x 340					6 x 4	5.76	11.5
	700 x 470						3	6
MATT	510 x 340					6 x 4	5.76	11.5
	700 x 470						3	6
SLATE	630 x 510			7.8	9.3	3 x 4	3	6
BRICK	650 x 520			9.3	14.7	8 x 12	3	6

## INSULATION INTERLOCKING PANEL PERFORMANCE

Performance range (R in W.M<sup>2</sup>/K) given for information purposes

		1.2 >1.5	1.8 >2.05	2.4 >2.55	3.05 >3.1	3.5 >3.7	3.7 >4.35	4.5 >5.15	5.35 >6.0	6.2 >6.5	6.8 >7.05
PSE Th38 Rock wool	thickness (mm)	60	80	100	120	140	160	180			
PSE Th32	thickness (mm)	40	60	80	100	120	140	160	180		
PSE Th38 + PIR Th24	thickness (mm)					100	120	140	160	180	
PSE Th32 + PIR Th24	thickness (mm)						100	120	140	160	180

## FINISHES FOR SPECIAL POINTS

		Metal profiles	Welded corners
ALPHA	ALL FINISHES	yes	yes

Metal profiles



welded corners



# AQUILA

MAKER OF IDEAS

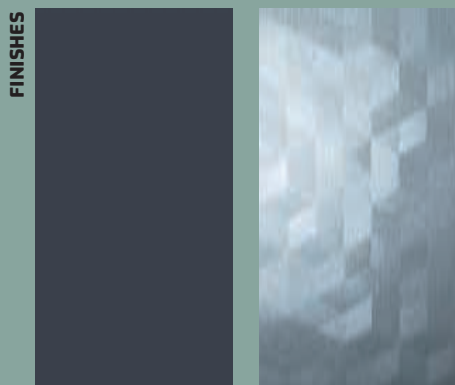
**SIZES**

- 1350 x 600mm (Landscape)
- 1200 x 600mm (Landscape)
- 600 x 1200mm (portrait)
- 600 x 600mm
- 600 x 300mm

**THICKNESS**

- 4mm
- 5mm (Q4)

**WEIGHT** 9 to 13kg/m<sup>2</sup>



MATT

PIXEL



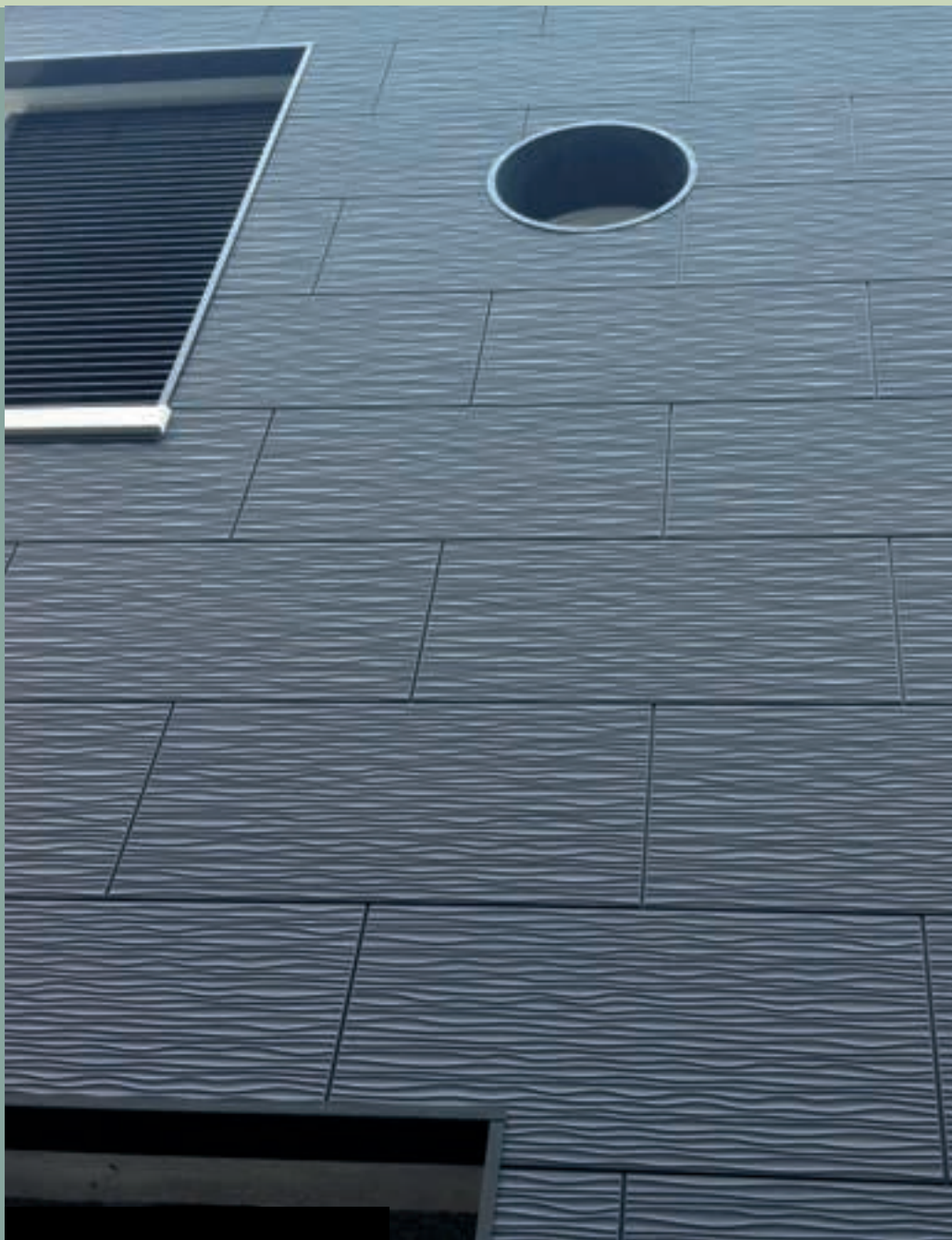
DUNE

CARVI

COLOURS ON P. 34/37

## AQUILA STRENGTHS

- Landscape and Portrait
- An infinite combination of sizes / colours / finishes



▼  
**CARRE DE SIAM BREST**

**Architect:**

CABINET CAP ARTECTURE à Brests

**Fixer:**

LUCAS REHA LAVAL

sous avis techniques  
**ECSTB**  
www.carea-facade.fr



## TECHNICAL SPECIFICATIONS

### AQUILA

FINISHES	PANEL SIZES L x H (in mm)	THICKNESS		WEIGHT PER m <sup>2</sup> in kg (without insulation)		JOINT SIZES l x d (in mm)	PANELS m <sup>2</sup>	FIXTURES m <sup>2</sup>
		STANDARD	SOLID	STANDARD	SOLID			
CARVI	600 x 1200 1200 x 600 1350 x 600	4	5	9	13	6 x 15	1.38 1.24	4.15 to 6.9 3.7 to 6.15
		4		12.5	13		1.38 1.24	4.15 to 6.9 3.7 to 6.15
4	12.5	13		1.38 1.24	4.15 to 6.9 3.7 to 6.15			
MATT	600 x 600 600 x 300 600 x 1200 1200 x 600 1350 x 600	2.8		9	12.5		12.5	2.78 5.56 1.38 1.24
		4						

## INSULATION INTERLOCKING PANEL PERFORMANCE

Performance range (R in W.M<sup>2</sup>/K) given for information purposes

		1.2 >1.5	1.8 >2.05	2.4 >2.55	3.05 >3.1	3.5 >3.7	3.7 >4.35	4.5 >5.15	5.35 >6.0	6.2 >6.5	6.8 >7.05
PSE Th38 Rock wool	thickness (mm)	60	80	100	120	140	160	180			
PSE Th32	thickness (mm)	40	60	80	100	120	140	160	180		
PSE Th38 + PIR Th24	thickness (mm)					100	120	140	160	180	
PSE Th32 + PIR Th24	thickness (mm)						100	120	140	160	180

## FINISHES FOR SPECIAL POINTS

		Metal profiles	Welded corners
AQUILA	ALL FINISHES	yes	yes

Metal profiles



welded corners





**CAB GEFFLOT ET VITEL  
RENNES**

**ARCHITECT:**  
SEVRES LOIRE HABITAT  
**FIXER:**  
SONISOL



**BOULEVARD DE VARSOVIE  
BÉTHUNE**

**ARCHITECT:**  
CABINET DOUANES et BE PROJEX  
**FIXER:**  
CABRE



**LE CELAR  
[ RENNES ]**

**ARCHITECT:**  
Cabinet Vitel/Géflot (Rennes)  
**FIXER:**  
AXIMA (Bouguenais)





FINISH: DUNE  
COLOUR: GALAPAGOS

**RES LES MADELEINES**  
[ MORTAGNE SUR SÈVRES (85) ]

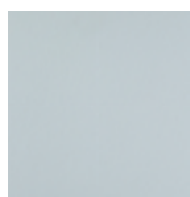
**ARCHITECT:**  
Cab Dugast à La Roche sur Yon  
**MAIN CONTRACTOR:**  
Vendée Habitat La Roche sur Yon.  
**FIXER:**  
Bergeret à La Roche sur Yon



# COLOURS

## GRIS - NOIR

---



Argent - 90



Gris nuage  
CM9923



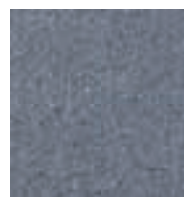
Safari - M6120



Souris - 299



Galapagos - 290



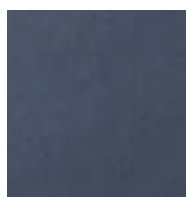
Fer - 264



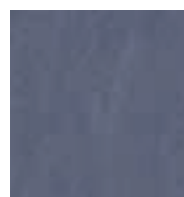
Gris vert - 7190



Gris quartz - 7193



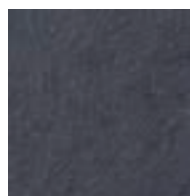
Gris anthracite  
7161



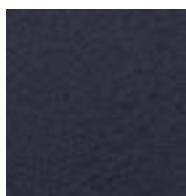
Gris ardoise  
7151



Chiné  
gris bleu - 9925



Noir opak - 9926



Noir - 60

Whilst every care and attention has been taken, slight colour variations may occur between physical samples and the colours reproduced in this brochure.

## NEW COLOURS

### ONYX

---



Cuivre - 9936



Or scintillant  
9935



Gris rainbow  
9938



Gris silver  
9937

### CANOPEE

---



Anthracite - C160



Cendré - C120



Acier - C190

### IRIDESCENT

---



Blueberry - 9930



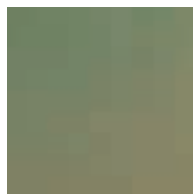
Océan - 9934



Lilas - 9932

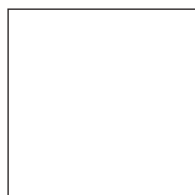


Sunset - 9931



Tropical forest - 9933

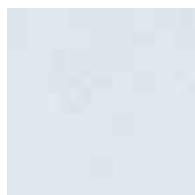
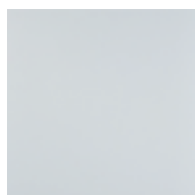
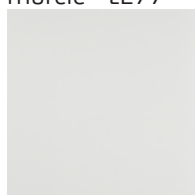
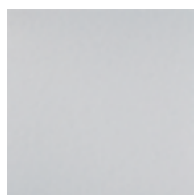
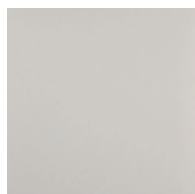
## BLANC - BEIGE



Blanc 73



Blanc - M9130

Blanc  
murcie - L277Chiné blanc  
écume - 9922Chiné blanc  
coquillage - 9940Chiné blanc  
perle - 99Blanc  
cendré - L9924

Craie 71



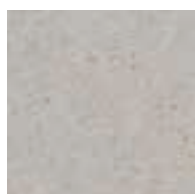
Sable 70



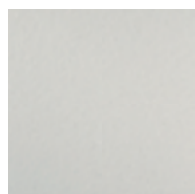
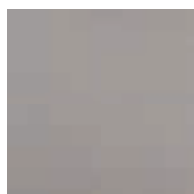
Ocre 30



Chiné grège - 164



Arène - 271

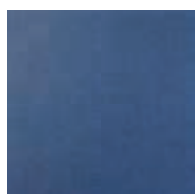
Pierre  
naturelle - 9942Ivoire  
chiné - CL 9939

Lin - L250



Sepia - 257

## BLEU



Cobalt - L215



Turquin - M5017



Maya - L218



Azur - M51273



Electrique - M5015

Whilst every care and attention has been taken, slight colour variations may occur between physical samples and the colours reproduced in this brochure.

**VERT**



Chiné vert menthe - 9944



Bronze - 263



Thé vert - 6110



Chiné vert clair - 9941



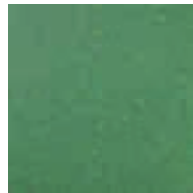
Chiné vert argile - 9943



Emeraude - L244



Prairie - M6018



Vert pomme - L249



Gazon - M6017



Vert pin - M6002

**ROUGE - ORANGE - MARRON**



Bordeaux - M3150



Rouge framboise - M3113



Rouge pompier - M3102



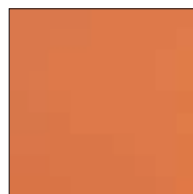
Aubergine - 40607



Terre - 55



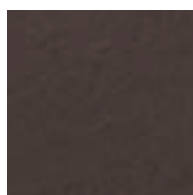
Terra cotta - 471



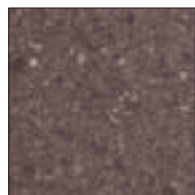
Safran - 158



Jaune zinc - 1018



Chocolat - 2838



Moka - 254





CAREA®  
**GROOVED  
PANELS**

---

# GROOVED PANELS

---

CAREA® EXTERIOR WALL CLADDING IS AN EXTERNAL INSULATION SYSTEM INCLUDING CAREA® MINERAL COMPOSITE PANELS FIXED TO CAREA PRIMALU BACKING STRUCTURES, WHICH ARE FIXED DIRECTLY ON THE WALL.

ADDITIONAL INSULATION IS INSERTED BETWEEN THE MAIN WALL AND THE PANEL, THIS INSULATION IS VENTILATED BY AIR CIRCULATING BETWEEN THE MATERIAL AND THE SUBSTRATE SUPPORTING WALL.

---

## CLADDING





### OUR STRENGTHS

- Secret fixing
- A large choice of combination (finishes, sizes and colours)
- Under CTSB and BBA approvals
- Easy maintenance

### GROOVED PANELS

#### CLADDING




Wood frame fixing possible



HAVE A LOOK ON  
CAREA® SCHOOL P.63

# ARDAL S11

**SIZES**  14 sizes  
up to 450 x 450mm  
1200 x 600mm

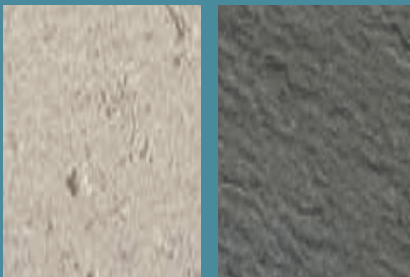
**THICKNESS**  mm S11

**WEIGHT** 26kg/m<sup>2</sup>



MATT

GLOSSY



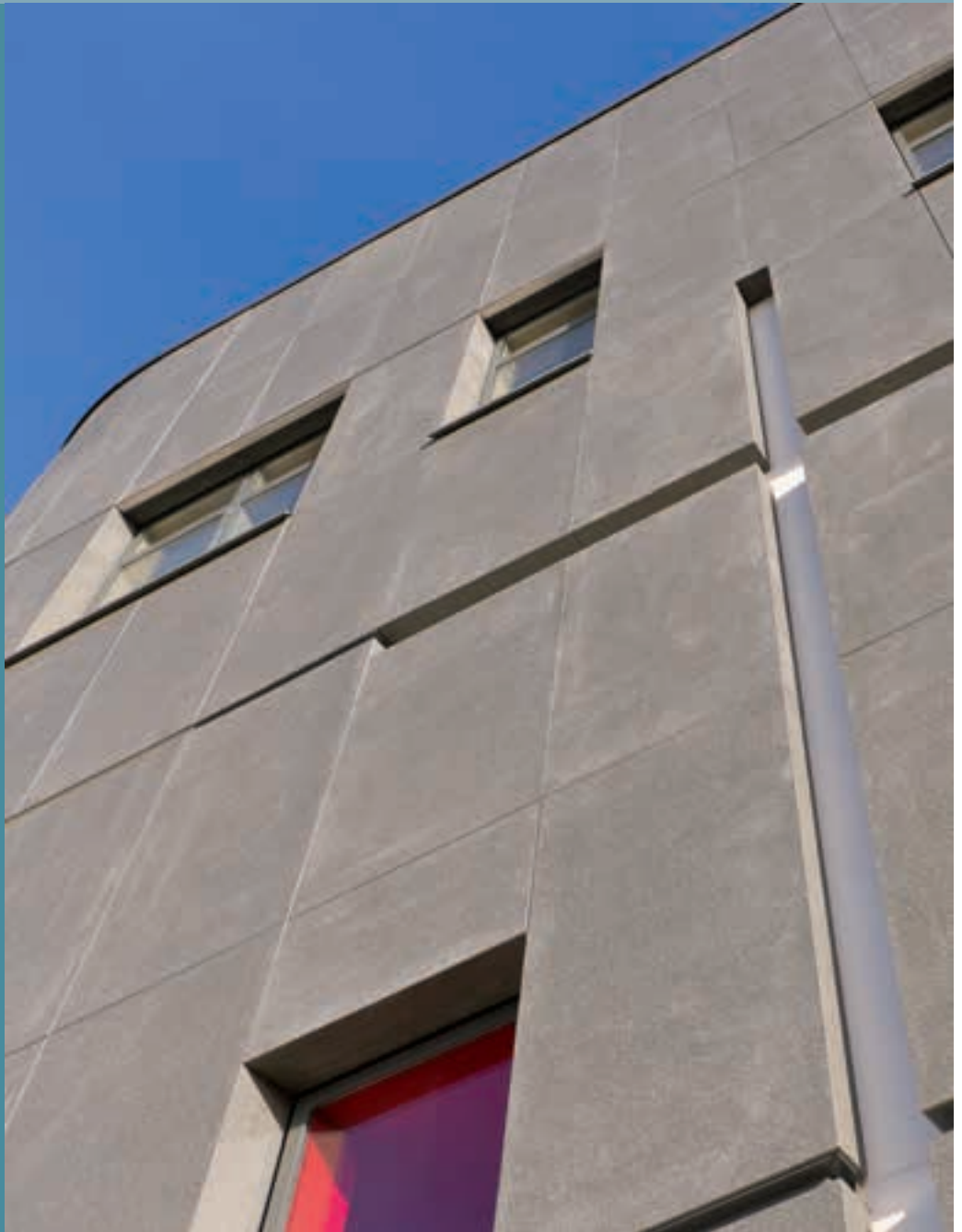
SHELL

RIVEN

COLOURS ON P. 56/57

## ARDAL STRENGTHS

- 14 standard sizes
- Large choice of sizes, finishes and colours
- Easy maintenance



Archbishop McGrath Catholic High School

**Architect:**

HLM Architects

**Main Contractor:**

Leadbitter

**Fixer:**

Central Cladding Systems

sous avis techniques  
**CSTB**  
www.carea-facade.fr

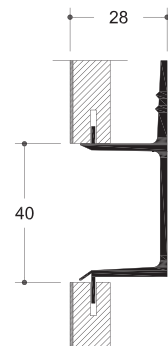
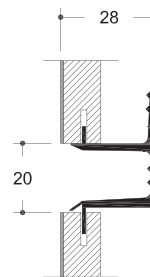
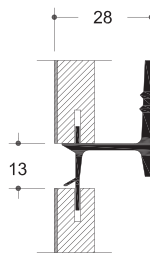
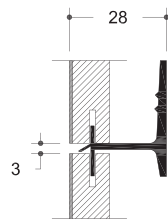
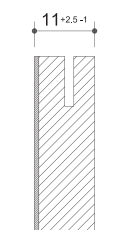


MADE IN FRANCE

FINISHES FOR **SPECIAL POINTS**

	FINISHES	SIZES	FM	AC	CB	CT
ARDAL	MATT GLOSSY	1200X600	yes	yes	yes	no
	RIVEN SHELL	UP TO 900X900 450X450	yes	yes	yes	yes

ABREVIATIONS	FM	METAL PROFILES
	AC	WELDED CORNERS
	CB	MITRED CORNERS
	CT	TREATED EDGES



Metal profiles



Welded corners



Mitred corners



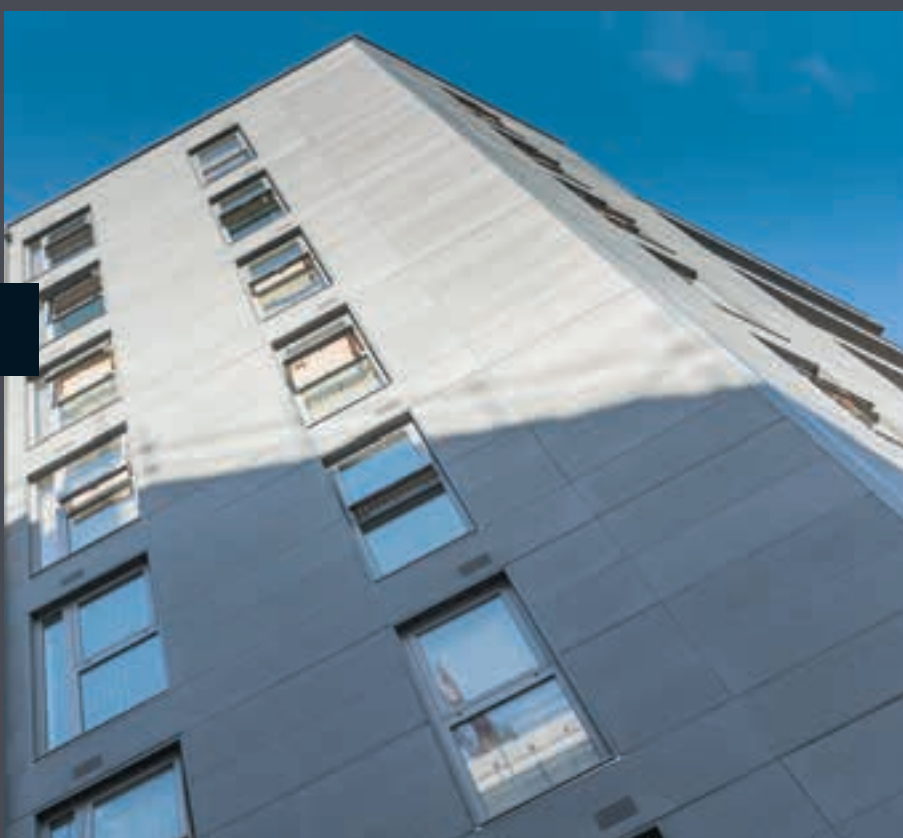
Treated edges





**JOHN LEWIS**  
[YORK]

**ARCHITECT:**  
DLA Architecture  
**MAIN CONTRACTOR:**  
Caddick construction  
**FIXER:**  
Coverstructure



**BETHNAL GREEN RESIDENCE**  
[LONDON]

**ARCHITECT:**  
Stock Wolstencroft (London)  
**FIXER:**  
OCL facades (London)



**JOHN LEWIS RETAIL**  
[EXETER]

**ARCHITECT:**  
Glenn Howell Architects

**Archbishop McGrath  
Catholic High School**


**ARCHITECT:**  
HLM Architects  
**MAIN CONTRACTOR:**  
Leadbitter  
**FIXER:**  
Central Cladding Systems



# ACANTHA

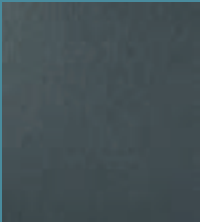


[NEW]

SIZES  Maximum size  
3000 x 900mm

THICKNESS  mm  WEIGHT S14:  
36kg/m<sup>2</sup>  
S16:  
38 to 43kg/m<sup>2</sup>

FINISHES



MATT



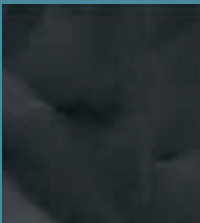
GLOSSY



RIVEN



PAPYRUS



RHODES



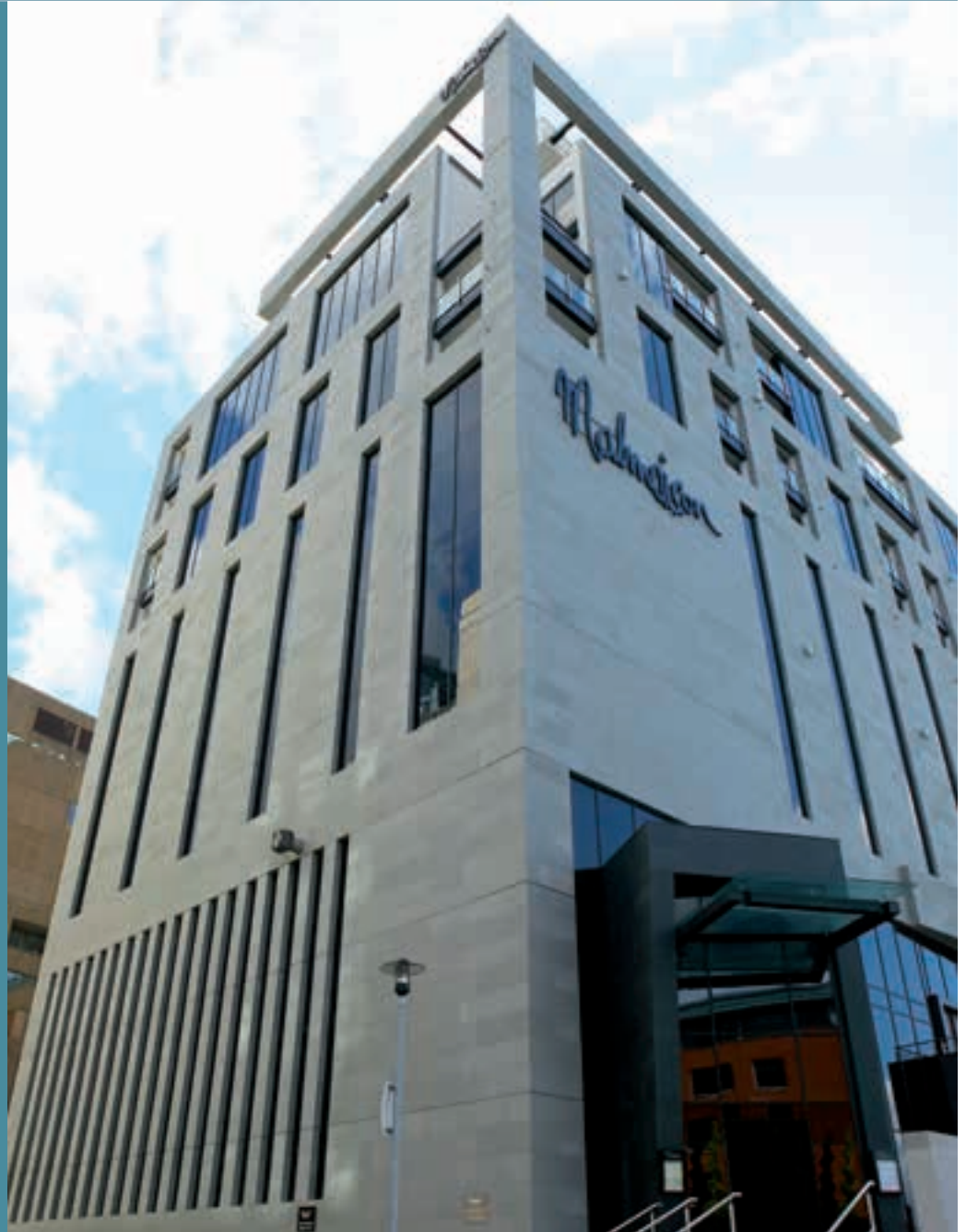
URBA

NEW



MOON

COLOURS  
ON P. 56/59



## ACANTHA STRENGTHS

- Bespoke finishes on request
- Many architectural possibilities

Malmaison Hotel (Liverpool)

Architect:

Leach Rhodes Walker

Main Contractor:

Morgan Sindall

Fixer:

Red architectural/Alufix



MADE IN FRANCE

FINISHES FOR SPECIAL POINTS

	FINISHES	PANELS SIZES	FM	AC	CB	BOM	BOT
ACANTHA	MATT	up to 1800 x 450	yes	yes	yes	yes	yes
	GLOSS			yes	yes	yes	no
	RIVEN			yes	yes	no	yes
	RHODES			no	no	no	yes
	PAPYRUS			no	no	no	yes
	URBA			no	no	no	yes
	MOON			no	no	no	yes
TAIGA	no	no	no	yes			

ABBREVIATIONS

FM METAL PROFILES  
AC WELDED CORNERS  
CB MITRED CORNERS  
BOM MOULDED BIRD MOUTH  
BOT TREATED BIRD MOUTH

Metal profil



Welded corners



Mitred corners



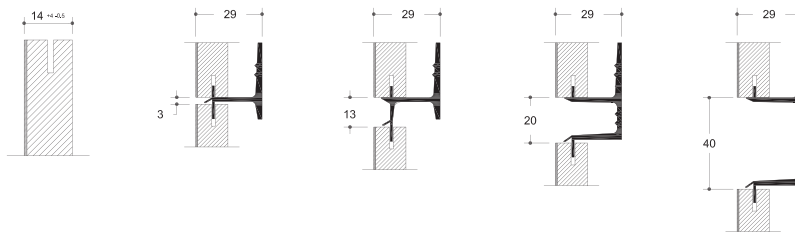
Moulded bird mouth



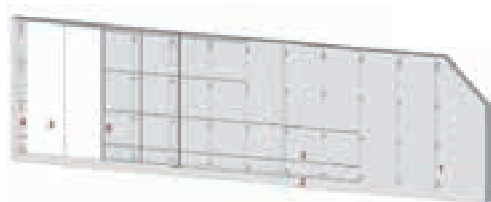
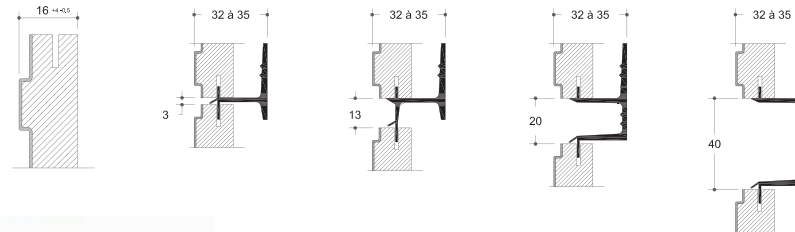
Treated bird mouth



ACANTHA S14



ACANTHA S16



Isometric View

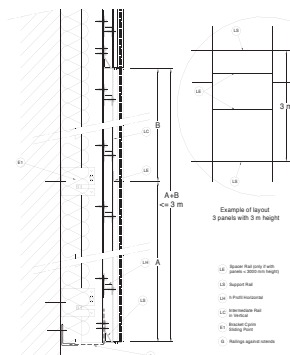
Horizontal view



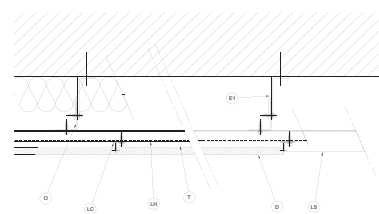
Vertical view



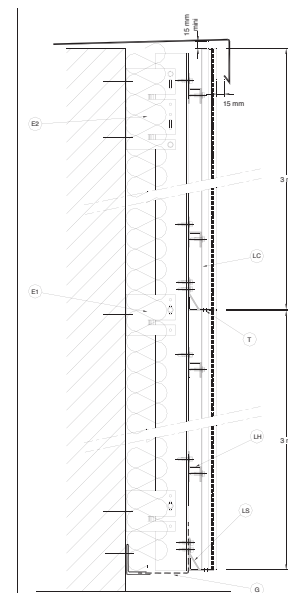
- 1 : Grooved Vertical Profile Cprim L65x50 with bracket Cprim (1 fixed and 3 sliding points)
- 2 : Support Rail
- 3 : h Profile
- 4 : Starter Rail
- 5 : Grooved Panel
- 6 : Intermediate Rail



VERTICAL CUT - detail on 3 m(h)  
with < 3000 mm panels



HORIZONTAL CUT ON CLADDING



VERTICAL CUT - detail on 6 m(h)  
with 3000 mm panels

- L5 : Support Rail
- L1 : h Profil in Horizontal
- L4 : Intermediate Rail in Vertical
- L3 : Bracket Cprim in Vertical
- E1 : Sliding Point
- E2 : Bracket Cprim Fixed Point
- G : Railing against rodents
- T : Drilling Hole for rain's water Ø 8 mm



**TRESHAM COLLEGE**  
[ NORTHAMPTONSHIRE ]

**ARCHITECT:**  
Bond Bryan  
**FIXER**  
BAM Construction

**LAW AND COURT BUILDING AT THE  
UNIVERSITY OF HERTFORDSHIRE**

**ARCHITECT:**  
RMJM  
**MAIN CONTRACTOR:**  
ISG PLC







**THE GATEWAY**  
[ LEEDS ]

**ARCHITECT:**  
Cary Jones  
**FIXER:**  
Baris



# ARMADA



THICKNESS  
mm  
S21

WEIGHT

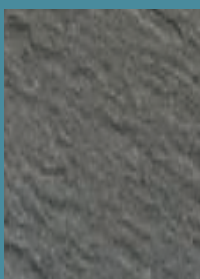
50kg/m<sup>2</sup>

SIZE

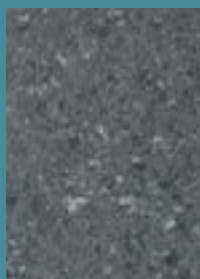


1800 x 450mm

FINISHES



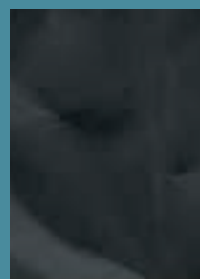
RIVEN



MATT



GLOSSY



RHODES



PAPYRUS

SIZE



900 x 300mm

FINISH



MATT



TORUS



LISTON

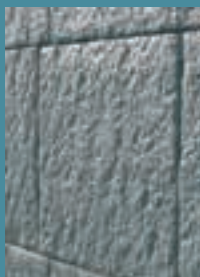
COLOURS ON P. 56/57

SIZES



400 x 500mm  
600 x 500mm

FINISH



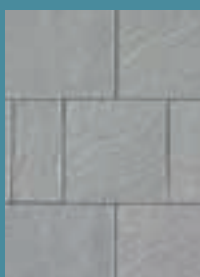
CAUCASE

SIZES



250 x 500mm  
500 x 500mm  
750 x 500mm  
1000 x 500mm

FINISH



SCHISTE

## ARMADA STRENGTHS

- Very high shock and aggression resistance (Q4)
- Anti-graffiti and scratch resistance
- Easy maintenance

sous avis techniques  
**CSTB**  
www.carea-facade.fr

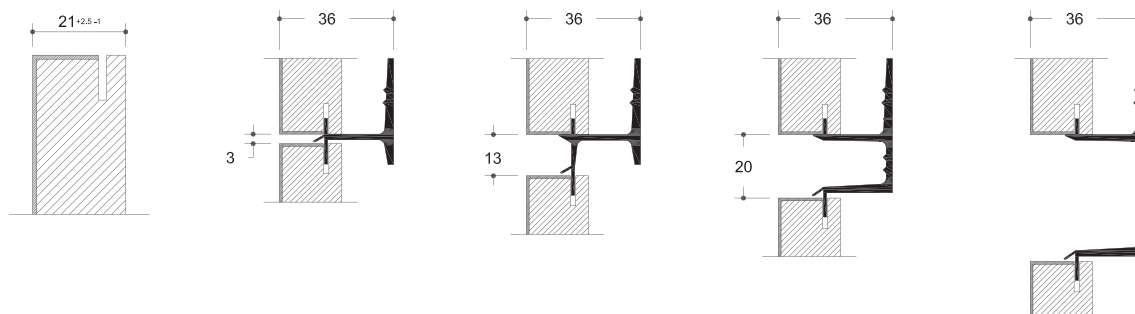


MADE IN FRANCE

**FINISHES FOR SPECIAL AREAS**

	FINISHES	PANEL SIZES L x h (in mm)	FM	AC	CB	BOM	BOT
<b>ARMADA</b>	MATT	UP TO 1800 x 450	yes	yes	yes	yes	yes
	GLOSSY			yes	yes	yes	no
	RIVEN			yes	yes	no	no
	RHODES			no	no	no	yes
	PAPYRUS			no	no	no	yes
	URBA			no	no	no	yes
	MOON			no	no	no	yes
	TAIGA			no	no	no	yes
	SCHISTE	250 x 250 500 x 500 750 x 500 1000 x 500	yes	yes	yes	yes	yes
	CAUCASE	400 x 500 600 x 500		no	no	yes	yes
MATT	900 X 300 LINEA LISTON TORUS	yes		yes	yes	yes	

ABBREVIATIONS	FM	METAL PROFILES
	AC	WELDED CORNERS
	CB	MITRED CORNERS
	BOM	MOULDED BIRD MOUTH
	BOT	TREATED BIRD MOUTH





**RÉSIDENCE LABARROIS**

[ NCEUX LES MINES ]

**ARCHITECT:**

SIA Habitat (Douai)

**FIXER:**

Genty (Saint Laurent Blangy)



**RÉSIDENCE QUARTIER PAVÉ BLANC**

[ CLAMART ]

**ARCHITECT:**

IDF architecture (Nogent-sur-Oise)

**FIXER:**

SA Aiguillon



**RÉSIDENCE LES EXPLORATEURS**

[ FEIGNIES ]

**MAIN CONTRACTOR:**


Promocil

**FIXER:**

SEPIC

# ARTEMA

S16

**SIZES**  Max: 2400 x 1000mm

**THICKNESS**  mm **S16** **WEIGHT** 38 to 50kg/m<sup>2</sup>



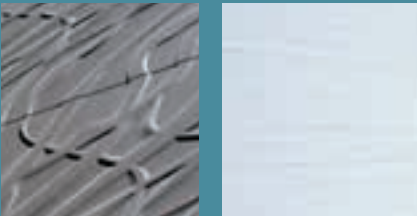
PAPYRUS

RHODES



URBA

TAÏGA



VEGETAL

WOOD PRINT

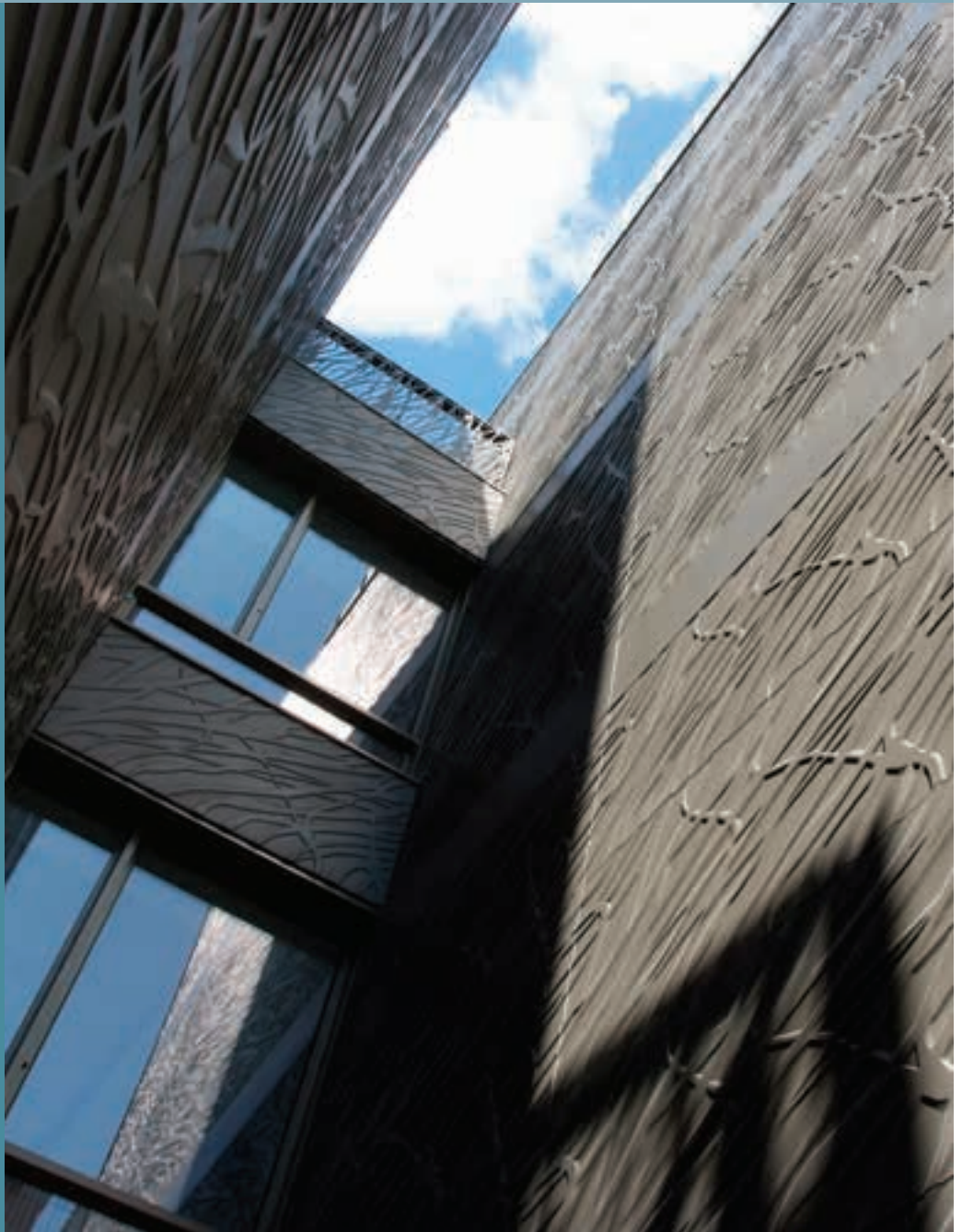


MOON

AVAILABLE IN MATT AND GLOSSY  
COLOURS ON P. 56/59

## ARTEMA STRENGTHS

- Bespoke finishes on request
- Curved panels



HOTEL ARTISANAL (PARIS 12)

**Architect:**

Cabinet Seura (Paris)

**Main contractor:**

Sageco (Paris)

**Fixer:**

SFB (Vaires-sur-Marne)



2/11-1439

ÉCO - CITOYEN

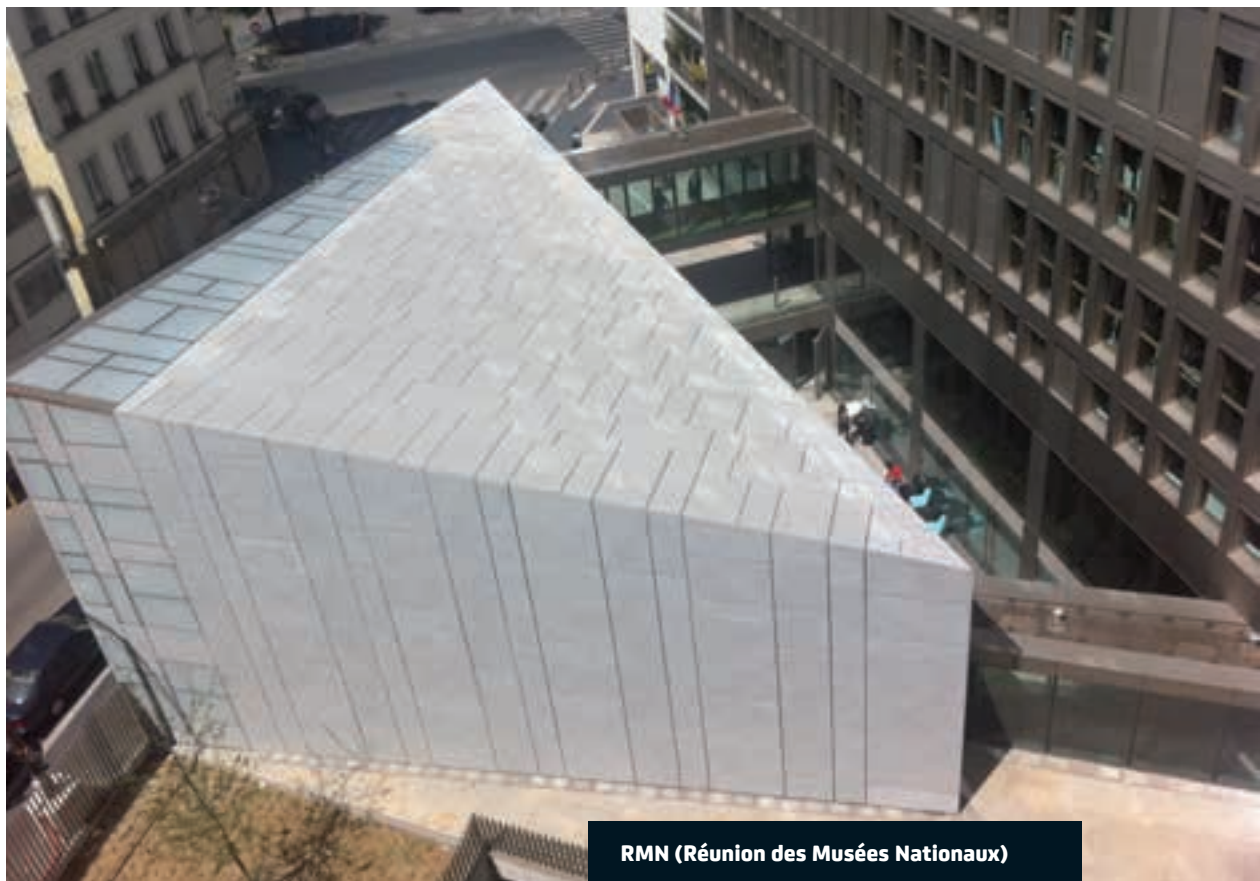
FDES

MADE IN FRANCE

**FINISHES FOR SPECIAL POINTS**

	FINISHES	PANEL SIZES L x h (in mm)	FM	AC	CB	BOM	BOT
<b>ARTEMA</b>	MATT	up to 2400 x 1000	yes	yes	yes	yes	yes
	GLOSSY			yes	yes	yes	no
	RIVEN			yes	yes	no	no
	RHODES			no	no	no	yes
	PAPYRUS			no	no	no	yes
	URBA			no	no	no	yes
	<b>[NEW]</b> MOON			no	no	no	yes
	TAIGA			no	no	no	yes
	WOOD FINISH			yes	yes	no	yes
	VEGETAL			no	no	no	yes

ABBREVIATIONS	FM	METAL PROFILES
	AC	WELDED CORNERS
	CB	MITRED CORNERS
	BOM	MOULDED BIRD MOUTH
	BOT	TREATED BIRD MOUTH



**RMN (Réunion des Musées Nationaux)**  
[ PARIS ]

**ARCHITECT:**  
Architectes 2/3/4 F ROUX et E PUZENAT (Paris 12)  
**FIXER:**  
ARBLADE TACOIGNIERES (MAP LAVAL)

# COLOURS

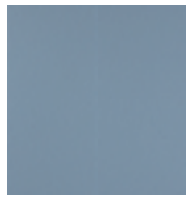
Whilst every care and attention has been taken, slight colour variations may occur between physical samples and the colours reproduced in this brochure.

## GRIS - NOIR

---



Gris pale - 1390



Gris nuage  
CM9923



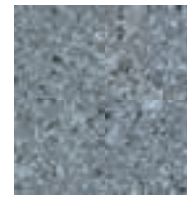
Galet - 2362



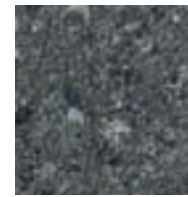
Boreal - 9024



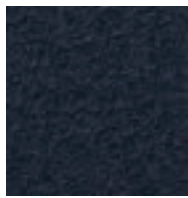
Roscoff - 9080



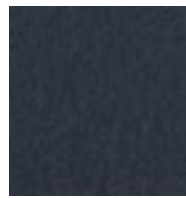
Eclipse - 9023



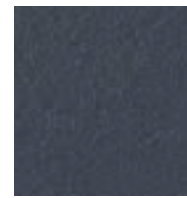
Basalte - 9081



Chiné  
gris bleu - 9925



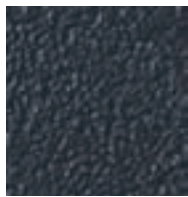
Gris anthracite  
9919



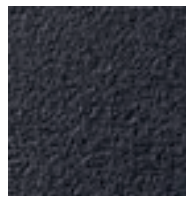
Gris ardoise  
9947



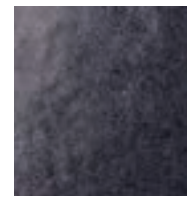
Gris taupe - 2310



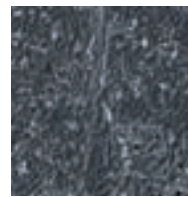
Noir- 384



Noir opak - 9926



Noir ardoise  
chiné - 9927

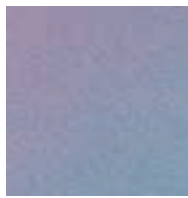


Noir  
labrador - 9026

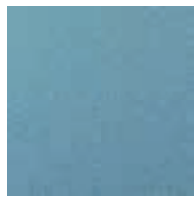


# NEW COLOURS

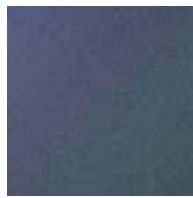
## IRIDESCENT



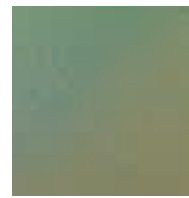
Lilas - 9932



Océan - 9934



Blueberry - 9930



Tropical forest - 9933



Sunset - 9931

## CANOPEE



Argent martelé



Marron martelé



Noir martelé

## ONYX



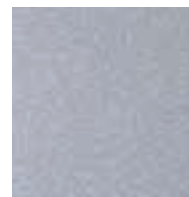
Cuivre - 9936



Or scintillant  
9935



Gris rainbow  
9938



Gris silver  
9937

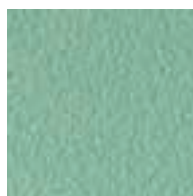
## VERT



Aqua marine - 1622



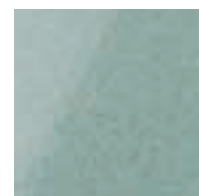
Vert d'eau - 1688



Vert pastel - 6400



Vert argile - 9943



Vert évasion chiné - 9945



Vert anis



Vert jaune - 6416



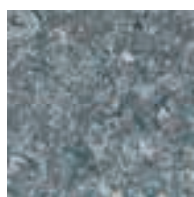
Vert pin - 6415



Lichen - 9035



Vert des Indes - 92028



Mer d'Irlande  
9050



Vert menthe  
9944



Vert clair  
9941

Whilst every care and attention has been taken, slight colour variations may occur between physical samples and the colours reproduced in this brochure.

## ORANGE - ROUGE - MARRON

---



Safran - 9910



Colorado - 9079



Saumon clair  
490



Terra cotta - 2171



Cuivre rouge  
2656



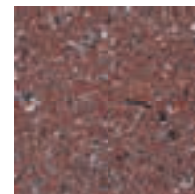
Rouge feu - 9905



Ocre rouge - 179



Canyon - 3226



Pierre pourpre  
9061



Bordeaux  
763826



Sienne - 51



Poulain - 187



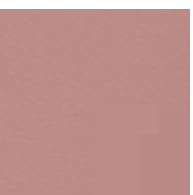
Chocolat - 2838



Terre d'ombre  
3360



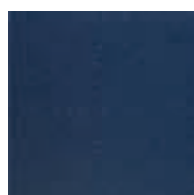
Granit rose - 9067



Rose thé - 1100

## BLEU

---



Bleu céleste - 3200

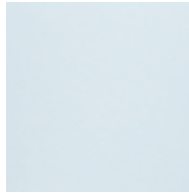


Mer d'Iroise - 9054



Lapis Lazuli - 9030

BLANC - BEIGE



Blanc banquise  
0010



Blanc serac - 007



Blanc écume  
9922



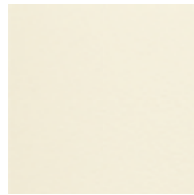
Blanc tempête  
742



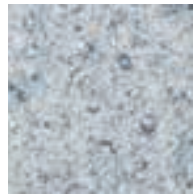
Blanc coquillage  
9940



Blanc cendré  
9924



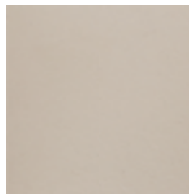
Blanc perle - 99



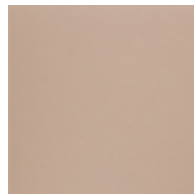
Blanc  
ornemental 9072



Névé - 9034



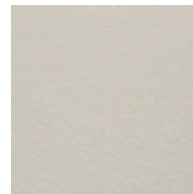
Champagne - 3044



Pêche - 1010



Grège - 164



Ivoire - 1011



Ambre - 1092



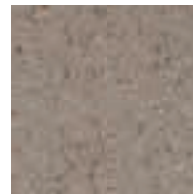
Copacabana  
9084



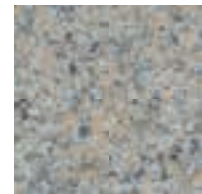
Hoggar - 9049



Ténéré - 9025



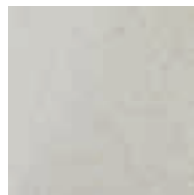
Joal - 9051



Jaune aurore  
9056



Pierre naturelle  
9942



Ivoire chiné - 9939



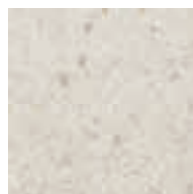
Opale - 1091



Iceberg - 9037



Tassili - 9022



Samoa - 9062



Opaline - 9029

# HOB

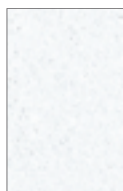
## WINDOW POD SYSTEM BY CAREA®

System for external thermal insulation dedicated to doors, windows and any other opening system components.  
This system offers an aesthetic and thermal solution which is quick and easy to install

### SIZES

Sills:  
1400 x 650 x 50mm  
HOB standard part:  
720 x 585 x 60mm

### FINISHES



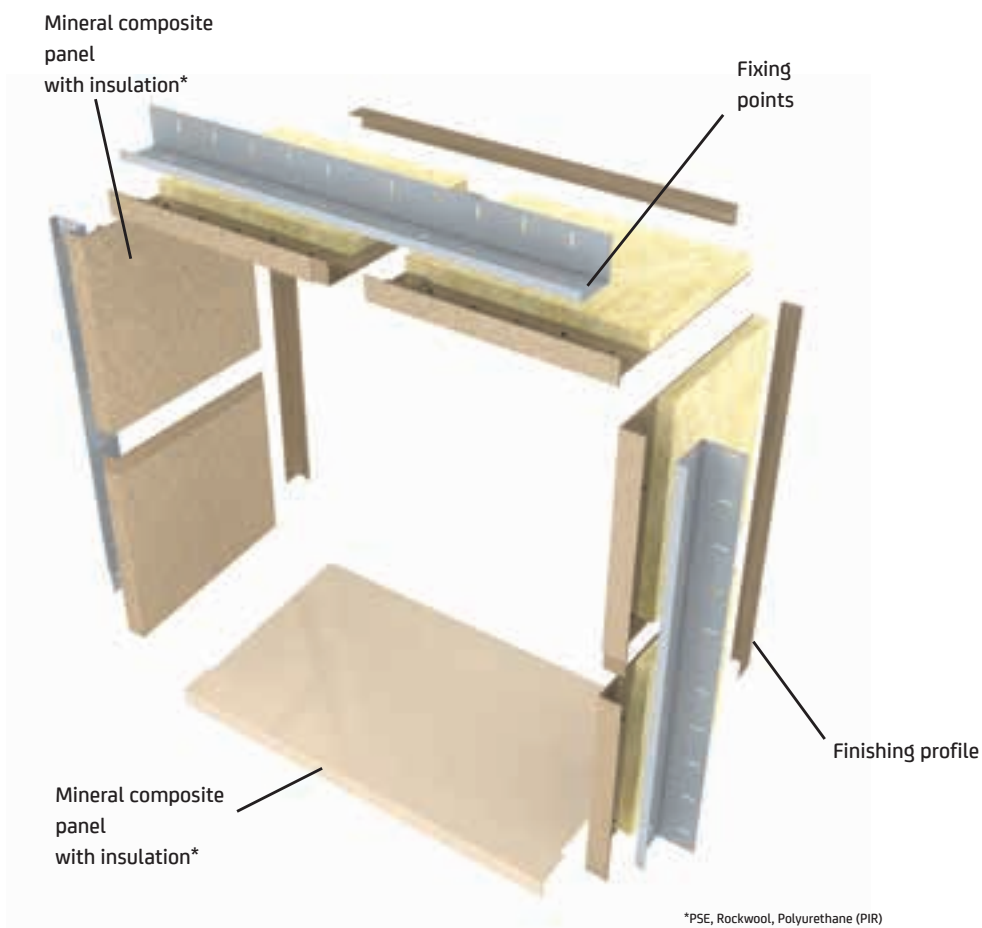
MATT



RIVEN



PAPYRUS



HOB's colours on page 34-37

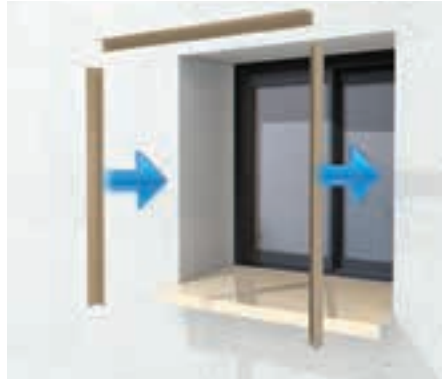
This system offers an AESTHETIC and THERMAL solution which is QUICK and EASY to fix..

STEPS

1 Install the sill



2 Install the special finishing profile



3 Install the reveals and head



4 Final adjustment



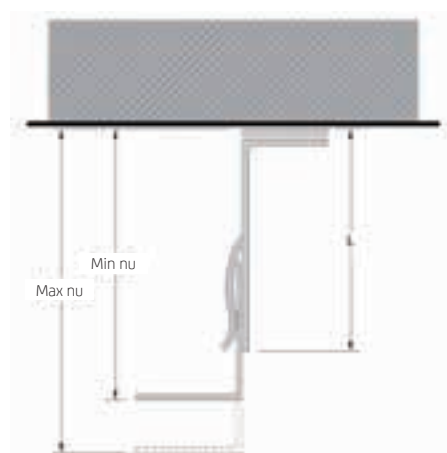
Flash the code to access to HOB video.



# CAREA® PRIMALU

## COMPLETE SYSTEM OF BACKING STRUCTURE

COMPLETE SYSTEM OF BACKING STRUCTURE FOR EXTERNAL THERMAL INSULATION, ASSOCIATING A PRIMARY COMPLEX CPRIM AND A SECONDARY COMPLEX CPRIM+ FOR THE FIXING OF CAREA® GROOVED PANELS.



LENGTH CPRIM	EDGE TO EDGE DISTANCE	
	MIN	MAX
100	125	150
120	145	170
160	185	210
200	225	250

**CAREA® PRIMALU** is **THE SOLUTION** to optimise the use of **CAREA®** systems.

- Designed for an aesthetic solution of special points
- Speed fixing to the helping hand on the Cprim market
- Vertical rails at up to 900mm centres
- Specially designed to give the best aesthetic solution

**A single point of contact: CAREA®, for your whole facade.**



CAREA® PRIMALU is composed of:

**Cprim (primary frame)**

- Bracket Cprim 160 (fix/butting)
- Bracket Cprim 80 (sliding fixing)
- Vertical profile Cprim L50x65

**Cprim+ (secondary frame)**

- Starter rail
- Intermediate rail 3mm joint
- Intermediate rail 13mm wide joint
- Intermediate rail 20mm deep joint
- Expansion Rail
- High rail
- End cap rails

**CPRIM ELEMENTS**

Grooved Vertical profile Cprim L50x65 marked for the fixing of Cprim+  
 Thickness 2,5mm  
 Aluminium 6060T5 (or 6063 T5)

Bracket Cprim 160 (fixed point)  
 Aluminium 6060 T5 (or 6063 T5)

Thermal packer to minimise coldbridge

Brackets Cprim 80 (sliding point)  
 Aluminium 6060 T5 (or 6063 T5)

Starter rail

Intermediate rail 3mm joint

Intermediate rail 13mm wide joint

Intermediate rail 20mm wide joint

**NEW**  
 High rail

**NEW**  
 Expansion rail

Pin finishing cap

Nail finishing cap

CPRIM	DISTANCE BETWEEN FRONT OF WALL TO FRONT OF TILE	
	MIN	MAX
100 mm	125 mm	150 mm
120 mm	145 mm	170 mm
160 mm	185 mm	210 mm
200 mm	225 mm	250 mm

**SYNOPSIS OF SPECIAL POINTS**

**NEW**

Post butting using rigid clips

Framework fractioning using a top stop claw

Fractioned framework without aluminium flashing



CENTRE  
TECHNIQUE  
**CAREA®**

TO ANSWER YOUR  
TECHNICAL ENQUIRES,  
CAREA HAS CREATED  
THE TECHNICAL  
CENTRE AND DESIGN  
DEPARTMENT

TECHNICAL CENTRE  
CAREA®

- Study of the optimal way to use the CAREA product
- Research for improvement for the innovation of materials
- Technical survey
- Technical assistance when required

**R&D has helped CAREA to become  
the market leader as a manufacturer  
of grooved facade materials.**





**CAREA®**  
SCHOOL

IN ORDER TO OBTAIN THE PERFECT INSTALLATION EVERYTIME, WE CREATED CAREA® SCHOOL. OUR DEDICATED TECHNICAL TEAM TRAINS YOU IN EVERY STAGE OF FITTING OUR PRODUCTS TO ACHIEVE PERFECTION FOR EACH PROJECT.

## YOUR QUESTIONS

- What technical documents are available with regard to the fixing of facade facing?
- What is the manufacturing process?
- How do you optimise the delivery of the products on the site to the installation of the project?
- How are our products used (fitting of products, treatment of special points, repair and replacement of panels...)?
- What tools are required for correct fitting?

## THE ANSWERS : THEORY AND MANUAL TRAINING

The theory lessons are dedicated to understanding the technical advice and the knowledge of "art work" ; They are illustrated with clear graphics and models. The technical training comprises of a hands on approach.

- 1/ Interlocking panels (Surfacing, panelling, cladding)**
- 2 / Grooved panels**
- 3 / Undercut anchored panels**

In addition to the correct tools, the fixing method is critical to a perfect installation.



**SIR WILLIAM STAINER SCHOOL**  
[CREWE]

**MAIN CONTRACTOR:**  
Willmott Dixon (Design & Build)  
**FIXER:**  
Roofdec



**MAC GREGOR ROAD**  
[CHELSEA]

**ARCHITECT :**  
Aldington craig and collinge  
**MAIN CONTRACTOR :**  
Clarendon  
**FIXER :**  
LCT



**RUE ROMAIN ROLLAND**  
[ NANTES ]

**ARCHITECT:**  
Cabinet AURA (Nantes)  
**MAIN CONTRACTOR:**  
ADI (Nantes)  
**FIXER:**  
Axina Nantes



**INDIGO HOTEL**  
[ LIVERPOOL ]

**ARCHITECT:**  
Falconer Chester Hall  
**MAIN CONTRACTOR:**  
Denizen  
**FIXER:**  
Eaga



**GLASGOW COLLEGE**

**ARCHITECT:**  
RMJM  
**FIXER:**  
Stoneguard



**SÈVRES HOSPITAL**  
[ SÈVRES ]

**ARCHITECT:**  
Atelier 11 (Paris)  
**FIXER:**  
Marteau - Sprite





**CURIAL**  
[ PARIS ]

**ARCHITECT:**  
Arcane (Paris)  
**MAIN CONTRACTOR:**  
Paris Habitat (Paris)  
**FIXER:**  
Lucas Réha (Laval)  
Brézillon (Roissy)



**RONALD MC DONALD HOUSE**  
[ BIRMINGHAM ]

**ARCHITECT:**  
AEW Architects  
**MAIN CONTRACTOR:**  
Bowmer et Kirkland  
**FIXER:**  
ECL Contracts

ALL OUR PRODUCTS,  
TECHNICAL APPROVALS,  
REFERENCES AND COLOURS  
ON

[www.carea-facade.fr](http://www.carea-facade.fr)  
[www.carea.uk.com](http://www.carea.uk.com)

